



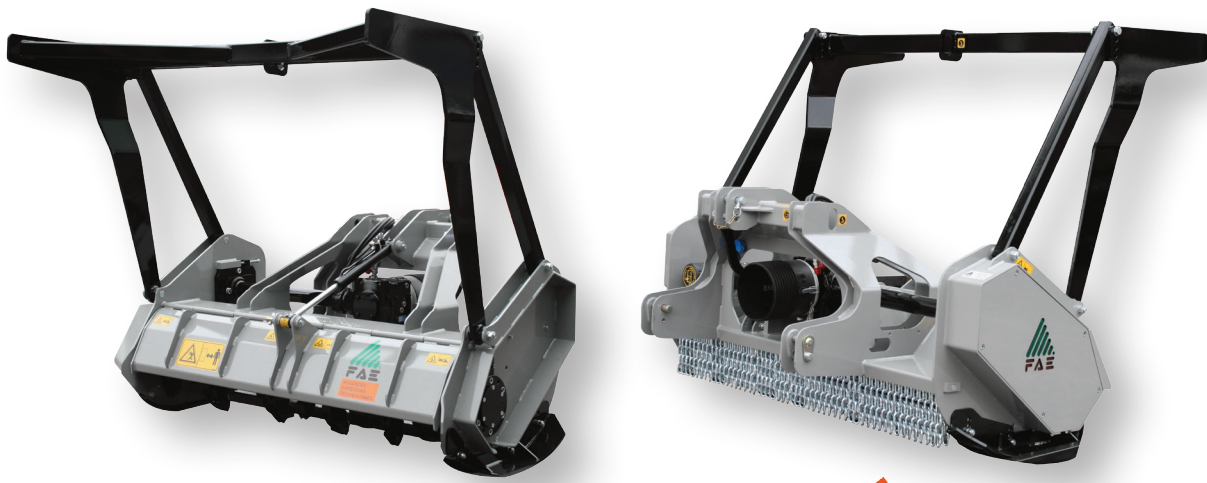
## UML/LOW

Forestry mulcher with fixed teeth rotor for tractors between 60 and 110 HP.

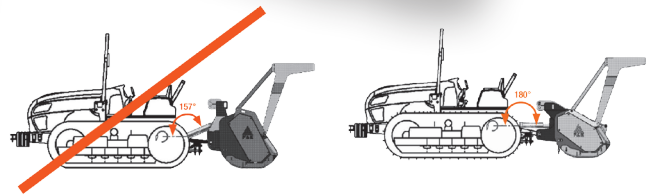
**Standard equipment:** PTO drive shaft with cam clutch, gearbox with freewheel, hydraulic rear hood, adjustable skids.

**Options:** hydraulic top link, special skids to go underground, push frame, option of rotor equipped with tooth type C/3/HD, type K, blade C/3 or tooth type I.

**Notes:** For the correct usage, creeper gear transmission and reversible driving console are recommended.



Especially developed for tractors with low three point hitch (e.g. crawler tractors).



## UML/LOW

Model	Tractor HP		PTO rpm	Working width inches	Overall width inches	Weight lbs	Grinding diameter inches (max)	Teeth q.ty/type C/3+C/3/SS	Teeth q.ty/type I+C/3/SS
	min	max							
UML/LOW 150	60	100	540	62	72	2050	8	32+2	42+2
UML/LOW 175	70	110	540	71	81	2337	8	36+2	50+2
UML/LOW 200	80	110	540	81	93	2623	8	42+2	58+2

Data refers to the machine without options.



Tooth type C/3 (standard)



Tooth type C/3/HD (option)



Tooth blade type C/3 (option)



Tooth type K (option)



Tooth type I (option)



Tooth type C/3/SS (side scraper)