



## STCH STCH/HD

Stone crushers for tractors  
between 180 and 300 HP  
with a max working  
depth of 25 cm.

**Standard equipment:** double driven transmission, PTO driveshaft with cam clutch, gearbox with freewheel, adjustable skids with interchangeable ploughshares and skid shoes, hydraulic rear hood, adjustable counter blade. In addition, for the **STCH/HD** model: PTO driveshaft without cam clutch, inner plates in Hardox steel, adjustable three point linkage, teeth type STC/3/HD. **Options:** dozing blade, road kit, hydraulic top link, possibility to have the rotor equipped with tooth type “STC/3/HD” or “STC/3/FP”. **Notes:** For the correct usage, a creeper gear transmission is recommended.



### STCH

Model	Tractor HP		PTO	Working	Overall	Weight	Grinding diameter	Working depth	Teeth q.ty/type
	Min	Max	rpm	width mm	width mm	Kg	mm (max)	mm (max)	STC/3+STC/3/HD
STCH 200	180	280	1000	2080	2550	4300	500	250	52+4
STCH 225	200	280	1000	2320	2790	4540	500	250	58+4
STCH 250	220	280	1000	2560	3030	4780	500	250	66+4

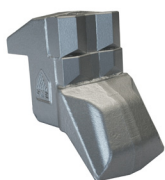
### STCH/HD

Model	Tractor HP		PTO	Working	Overall	Weight	Grinding diameter	Working depth	Teeth q.ty/type
	Min	Max	rpm	width mm	width mm	Kg	mm (max)	mm (max)	STC/3/HD
STCH-HD 225	200	300	1000	2320	2790	4770	500	250	62
STCH-HD 250	220	300	1000	2560	3030	5120	500	250	70

Data refers to the machine without options.



Tooth type STC/3



Tooth type STC/3/HD (option)



Tooth type STC/3/FP (option)



Tooth type STC/3/HD (side scraper)