



RSL

Rock shredder - Stone crusher - Soil stabilizer and Asphalt grinder* with a max working depth of 11 inches. for tractors between 80 and 190 HP

Standard equipment: PTO driveshaft with cam clutch, hydraulic adjustable skids, HARDOX® counter blades, inner bolted HARDOX® plates for a complete anti-wear protection, bolted grid on rear hood, forged tool holders made of heat treated steel, oversized rotor bearings, "double steel cage system" machine shell (WELDOX® steel) to provide an effective protection against dust, structural steel outside and wear resistant steel inside, rear hydraulic protection/dozing hood for a better regulation of the output material, bolted forged rotor axles, transmission to the rotor with one side gearbox, KIT - Filtration System.

Options: hydraulic top link, water spray system Possibility to have the rotor equipped with tooth type "G/3".

Notes: For the correct usage, a creeper gear transmission is recommended.



RSL

Model	Tractor HP Min Max	PTO rpm	Working width inches	Overall width inches	Weight lbs	Working depth inches (max)	Teeth q.ty/type R+R/HD	Teeth q.ty/type G/3+H
RSL 100	80 - 120	540	39	56	3,530	6 - 11	58 + 16	32+4
RSL 125	90 - 120	540	49	66	3,970	6 - 11	82 + 16	40+4
RSL 150	100 - 120	540	59	76	4,100	6 - 11	98 + 16	48+4

RSL/DT

Model	Tractor HP Min Max	PTO rpm	Working width inches	Overall width inches	Weight lbs	Working depth inches (max)	Teeth q.ty/type R+R/HD	Teeth q.ty/type G/3+H
RSL/DT 175	120 - 190	1000	68	81	5180	6 - 11	58 + 16	58+4
RSL/DT 200	130 - 190	1000	77	91	5510	6 - 11	82 + 16	66+4
RSL/DT 225	140 - 190	1000	87	100	5840	6 - 11	98 + 16	76+4

Data refers to the machine without options.

*in specific condition



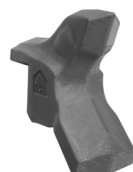
Tooth type R 65



Tooth type R/HD 65
(option)



Tooth type R 44
(option)



Tooth type G/3
(option)



Tooth type G/3/R44
(option)



Tooth type R/HD 65
(side scraper)



Tooth type H
(side scraper)